

**exhibitions available for tour**

Issue Number 48, 2010



**DILLON BLANSKI AND MATT MCNERNEY** *PACE* high density foam, mixed media  
44 x 110 x 30 cm. From *INDUSTRIAL DESIRE: DETROIT CONCEPT CARS*

**museum  
& gallery SERVICES**  
QUEENSLAND

LEVEL 3, 381 BRUNSWICK STREET,  
FORTITUDE VALLEY QLD 4006  
P 07 3215 0820 Freecall 1800 680 433 F 07 3215 0821  
E [information@magsq.com.au](mailto:information@magsq.com.au) W [www.magsq.com.au](http://www.magsq.com.au)

**TOURING EXHIBITION PROGRAM**

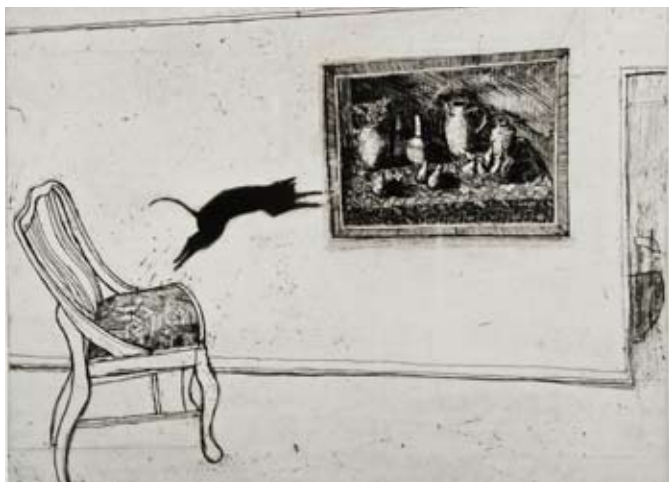
**Fiona Marshall** Exhibition Program Manager  
P 07 3215 0826  
E [fiona.marshall@magsq.com.au](mailto:fiona.marshall@magsq.com.au)

**Jodi Ferrari** Exhibition Development  
Coordinator  
P 07 3215 0825  
E [jodi.ferrari@magsq.com.au](mailto:jodi.ferrari@magsq.com.au)

# CONTENTS

METAL AS ANYTHING	2
DESERT PSYCHEDELIC: JIMMY PIKE	2
SWAMP CARTOGRAPHY: NOTES IN SILVER AND CLAY	3
COLLIDING ISLANDS	3
INDUSTRIAL DESIRE: DETROIT CONCEPT CARS	4
TINKER, TAILOR, SOLDIER, SAILOR...100 YEARS, 100 WOMEN, 100 STORIES, 100 BROOCHES	4
BIRDS OF PARADISE	5
WILDLIFE PHOTOGRAPHER OF THE YEAR 2010	5
SAGES	6
°SOUTH: WAR	6
COLOUR TEXTURE FORM	7
IAN SMITH: ON AND OFF THE ROAD	7
OCULI: TERRA AUSTRALIS INCOGNITA – A PHOTOGRAPHIC SURVEY	8
EXCESSORY: CONTEMPORARY AUSTRALIAN JEWELLERY	8
PROSPECTS: RE-IMAGING GOLD COUNTRY AT OPHIR AND HILL END	9
MARALINGA: THE ANANGU STORY	9
CHRISTOPHER TROTTER: ANIMATED STEEL	10
THROUGH THE LOOKING GLASS	10
'OUR PLACE', QUEENSLAND REGIONAL ART AWARDS	11
THE 60TH BLAKE PRIZE – TOURING EXHIBITION	11
ONE PERSON IN ISOLATION	12
MUSIC FROM A FARTHER ROOM	12
EXOTIC QUEENSLAND: THE NATURE, THE WONDER	13
SHIBORI UNBOUND	13

# METAL AS ANYTHING



RON MCBURNIE *THIS WAS WHISTLER'S MOTHER'S CAT'S THIRD ATTEMPT TO JUMP ONTO THE TABLE OF THE MARGARET OLLEY PAINTING* 1997 from the Suburban series. Hard ground etching and aquatint 39 x 49 cm. Edition of 20

METAL AS ANYTHING is a survey exhibition showcasing thirty years of the diverse and intricate etchings of Townsville artist Ron McBurnie - a place where misbehaving dogs, ducks in box kites, jumping cats and eccentric toad shooters meet to examine their place in the carnival of characters and landscapes that the artist has created. McBurnie's world is quirky and endearing, a result of the artist's ability to highlight the weird and wonderful events that occur in our 'mundane' suburban environment.

McBurnie is an artist working on many levels and beyond the humour, his etchings are able to critique our political landscape and frequently reference art history. This is most evident in his more recent Romantic works, in which his refined mark-making is directly inspired by the works of William Blake, Hendrik Goudt, author Kenneth Grahame and most significantly, the 19th century English landscape painter Samuel Palmer.

## ORGANISED BY

Perc Tucker Regional Gallery

## TOURED BY

Museum & Gallery Services Queensland

## CURATOR

Amber Church

## ARTIST

Ron McBurnie

**Contact:** Jodi Ferrari, Museum & Gallery Services Qld

**T** 07 3215 0825 **E** jodi.ferrari@magsq.com.au

**Cost:** \$2,700 - \$3,000 + GST (subject to funding)

**Size:** Approximately 80 linear metres

**Support material:** 64-page monograph, didactic panels and labels, pdf invitation template, press release, disc of promotional images

**Education/Public Programs:** Education kit (includes short DVD film of print process)

**Available:** May to August 2012; 2013

# DESERT PSYCHEDELIC: JIMMY PIKE



Installation of *Desert Psychedelic* at Gallery artisan. Photo by Andrea Higgins for artisan

Produced at the height of the Indigenous cultural renaissance, Jimmy Pike's designs are vivid, dynamic and groundbreaking in their use of non-traditional colours. Due to his collaboration with the company, Desert Designs, they exploded onto an international stage via high-fashion garments, textiles and furnishings, and represented one of the most successful forays into the intersecting territories of Indigenous art, craft and commercial design to date.

This exhibition, featuring Pike's original prints, textile lengths and the garments produced from his fabric designs, offers a chance to celebrate Jimmy Pike's unique talent and to revisit some spectacular fashion from the eighties.

## ORGANISED BY

artisan

## TOURED BY

Museum & Gallery Services Queensland

## CURATOR

Kirsten Fitzpatrick

## ARTIST

Jimmy Pike

**Contact:** Jodi Ferrari, Museum & Gallery Services Qld

**T** 07 3215 0825 **E** jodi.ferrari@magsq.com.au

**Cost:** \$2,500 + GST

**Size:** 50 running metres - adaptable to suit smaller and larger spaces: 30 x 4 metre textile lengths (on dowel), 20 prints on paper (approx 70 x 80cm), 10 garments.

**Support material:** Catalogue, exhibition labels, didactics, media kit, invite shell, tour manual, accompanying books by Jimmy Pike and Patt Lowe for sale

**Education/Public Programs:** Floor talks or textile workshops by Steve Culley, Desert Designs (by negotiation at venue cost)

**Available:** July to November 2012

# SWAMP CARTOGRAPHY: NOTES IN SILVER AND CLAY



SHANNON GARSON *BLOODWOOD FAMILY* 2010

SWAMP CARTOGRAPHY builds on the creative practice and exhibition experience of artists Shannon Garson and Rebecca Ward. This collaboration extends the capacities of jewellery, glass and ceramics to broaden concepts of art, and explore the ecology and flora of the exquisite, fast disappearing wallum swamps of coastal Australia.

Through an extensive series of field trips investigating and documenting wallum areas as part of an Arts Queensland funded artist research project, SWAMP CARTOGRAPHY is an exciting cross-media collaboration that includes a series of thrown porcelain vessels exploring the eco-diversity found in the wallum swamps. These will be accompanied by a group of blown glass vessels and huge, delicately etched glass drawings. Specially designed cabinets will display a series of small objects - brooches, bracelets and necklaces, acid etched with photographs and drawings, and incorporating cuttlefish cast and glass cast elements from the Wallum. The exhibition design encourages the viewer to experience the thrill of the 'beachcomber' by drawing them in to a close engagement and the sense of discovery of a world of tiny details.

Innovative modes of exhibition including film, internet and public programs also draw in the community. A documentary film of the collaborative process and a strong web-based media component expands the capacities of the exhibition beyond the gallery walls. The exhibition is complemented by public programs including workshops, artist talks and 'pop-up' exhibitions.

Follow the blog about their collaborative process and a record of the Wallum at [swampcartography.blogspot.com](http://swampcartography.blogspot.com)

## TOURED BY

Museum and Gallery Services Queensland

## CURATOR

Janet Deboos

## ARTISTS

Shannon Garson (ceramicist) and Rebecca Ward (jeweller)

**Contact:** Fiona Marshall, Museum & Gallery Services Qld  
**T** 07 3215 0826 **E** [fiona.marshall@magsq.com.au](mailto:fiona.marshall@magsq.com.au)

**Cost:** \$2,000 - \$2,500 + GST (subject to funding)

**Size:** 25 square metres - may be adapted to smaller spaces

**Support material:** Catalogue, didactics

**Education/public programs:** Artists talks, workshops in jewellery and ceramics, 'pop-up' events, film and blog

**Available:** From May 2012

# COLLIDING ISLANDS



ARCHIE MOORE *POOR-TRAITS* (detail) 2009 ink on paper  
200 x 50cm

COLLIDING ISLANDS explores the shifting cultural significance of landscape - from traditional concepts of nature to the socio-urban topography of contemporary identities. Specifically, it looks at the complex, and sometimes ambivalent, relationships we have with local and international landscapes, particularly conflicted landscapes.

Curated by Louise Rollman (AUSTRALIA), COLLIDING ISLANDS features eight newly created and existing works by five contemporary artists - Jillian Conrad (US), Olivier Dollinger (FRANCE), David Hamill (US), Archie Moore (AUSTRALIA) and Heeseop Yoon (KOREA/US). For the international artists, this is their first exhibition in Australia.

For COLLIDING ISLANDS, the traditional landscape genre is subverted through a diversity of physical and psychological 'landscapes' and a range of unconventional media, including concrete rubble, glitter, ink, black masking tape, and digital video. The combination of artworks reflects collisions with technology and questions how our environments are constructed and defined.

This project has received financial assistance from the Queensland Government through Arts Queensland.

## TOURED BY

Museum and Gallery Services Queensland

## CURATOR

Louise Rollman

## ARTISTS

Jillian Conrad (US) Olivier Dollinger (FRN) David Hamill (US)

Archie Moore (AUS) Heeseop Yoon (KOR/US)

**Contact:** Jodi Ferrari, Museum & Gallery Services Qld  
**T** 07 3215 0825 **E** [jodi.ferrari@magsq.com.au](mailto:jodi.ferrari@magsq.com.au)

**Cost:** \$2,000 + GST

**Size:** Approximately 150 square metres, adaptable to suit small spaces

**Support material:** Online catalogue, exhibition labels, interpretative/didactic panels, media kit, exhibition tour manual

**Available:** September to December 2010; March 2011; June to November 2011

## INDUSTRIAL DESIRE: DETROIT CONCEPT CARS



JOHN MCDUGALL *CHEVY* high density foam, mixed media 50 x 100 x 70 cm

Featuring ten scale models of fantastic concept vehicles including futuristic SUVs, muscle cars and cutting edge ecofriendly city cars, INDUSTRIAL DESIRE will take you deep into the exciting and hidden world of car design. Stunning supporting visuals include original sketches and renderings, as well as a rich multimedia video experience revealing the process of their creation; the rapid sketching, rendering, digital 3-D modeling, machining and finishing of ultra-high quality scale models rarely seen by the public. Merging the Motor City's gothic beauty and its futuristic transport design, the show will set aflutter the hearts of dedicated car-lovers and passionate designers alike.

### ORGANISED BY

artisan

### TOURED BY

Museum and Gallery Services Queensland

### CURATOR

Leon Fitzpatrick

### ARTISTS

Model cars drawn from the collection of Centre for Creative Studies, Detroit

**Contact:** Fiona Marshall, Museum & Gallery Services Qld

**T** 07 3215 0826 **E** fiona.marshall@magsq.com.au

**Cost:** \$3,000 + GST

**Size:** 10 concept car models approximately 80 x 45 x 50cm

**Support material:** Catalogue, DVD of interviews with Detroit-based car designers, DVD with car sketches, renderings and process of model production interspersed with footage of Detroit

**Available:** September 2010 to September 2011

## TINKER, TAILOR, SOLDIER, SAILOR...100 YEARS, 100 WOMEN, 100 STORIES, 100 BROOCHES



KATHRYN WARDILL *BROOCH SERIES* silver metal clay, lampworked glass, stainless steel pins 5.0 x 4.0 x 3.0 cm

"Tinker, Tailor, Soldier, Sailor..." so begins a 17th Century rhyme that little girls would chant to predict the profession of the man they would marry. Not in their wildest dreams could they have imagined that all the professions recited, from priests to lawyers, would one day be occupations for women. They are now but only as a result of a massive struggle and the actions and determination of countless women across the world.

The exhibition TINKER, TAILOR, SOLDIER, SAILOR... will celebrate the centenary of International Women's Day on 8 March 2011. It will feature 100 stories of great Australian women who have broken the barriers in arts, sciences, humanities and sports, and 100 brooches made in response to these stories by 100 of Australia's most talented women jewellers. With a mix of amazing, enthralling and entertaining tales of women aviators, explorers, activists, spies and artists and 100 extraordinary brooches TINKER, TAILOR, SOLDIER, SAILOR... is an engaging way to acknowledge the achievements of Australian women. As well as showcasing a brilliant collection of contemporary jewellery, it will generate pride for the milestones set by the women of the past and provide inspiration for the women of the future.

### ORGANISED BY

artisan

### TOURED BY

Museum and Gallery Services Queensland

### CURATOR

Kirsten Fitzpatrick

**ARTISTS** 100 Australian female jewellers including:

Helen Aitken Kuhnen Julie Blyfield Carolyn Delzoppo  
Jan Donaldson Dorothy Erickson Kylie Gartside  
Rowena Gough Barbara Heath Linda Hughes Jin Ah Jo  
Michelle Kelly Sheridan Kennedy Julie Kiefel Bridie Lander  
Cath Large Darani Lewers Sim Luttin Marion Marshall  
Vicki Mason Belinda Newick Nina Oikawa Felicity Peters  
Regine Schwarzer Elizabeth Shaw Vicki Shukuroglou  
Lauren Simeoni Blanche Tilden Julia deVillie Kathryn Wardill  
Alice Whish

**Contact:** Fiona Marshall, Museum & Gallery Services Qld

**T** 07 3215 0826 **E** fiona.marshall@magsq.com.au

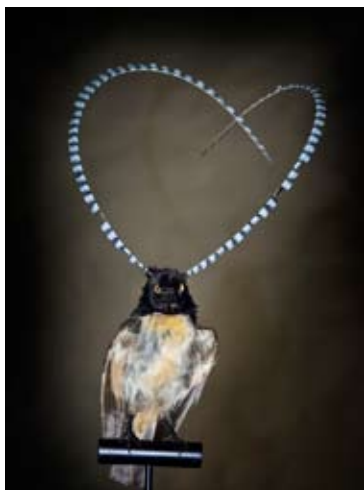
**Cost:** To be confirmed

**Size:** 100 brooches, 10 custom-built display cases, 10 x AO panels with stories and photos of the inspiring women

**Support material:** Fully illustrated catalogue

**Available:** September 2011 to March 2013

## BIRDS OF PARADISE



KING OF SAXONY BIRD OF PARADISE *PTERIDOPHORA ALBERTI*

In the vine-tangled rainforests of New Guinea, Australia and Indonesia is a mating game like no other – that of the ostentatious birds of paradise. With a name like birds of paradise, you could be forgiven for thinking that they must have descended straight from an unknown realm, their absurd dancing and secluded tropical homes only fuelling the myth. But, in fact, it is this isolation from the rest of the world that has allowed sexual selection to work its magic on these birds, morphing them into the strange and the beautiful.

This exhibition is an experience, an opportunity to see nature at its wildest and most unrestrained. Rare footage, unique photographs, engaging interactives and atmospheric design all conspire to give visitors a birds-eye-view of one of the world's most secretive seductions. If you have your own specimens you can also add to this exciting display.

Exhibition currently in development - please enquire for further details.

### ORGANISED AND TOURED BY

Australian Museum, Sydney

**Contact:** Elizabeth Cowell, Australian Museum, Sydney

**T** 02 9320 6325 **E** elizabeth.cowell@austmus.gov.au

**Cost:** To be confirmed

**Size:** 350 - 400 square metres

**Support material:** To be confirmed

**Available:** From November 2011

## WILDLIFE PHOTOGRAPHER OF THE YEAR 2010



LEE SLABBER (SOUTH AFRICA) *EYES ON THE OASIS* 2009 photograph. Animal Portraits - Highly Commended © Lee Slabber /Wildlife Photographer of the Year 2009. Canon EOS-1D Mark III + Canon EF600mmlens; 1/250 sec at f5.7; ISO200

Be transported to places of high drama and extreme beauty and discover, through the lens of some of the best photographers from around the globe, an amazing natural world rarely seen. This exhibition showcases this year's winning photographs from the Wildlife Photographer of the Year Competition.

The competition is an international leader in its field. It encourages interpretations of the natural world through art and is the most prestigious contest of its kind. Images are judged by an expert panel and the results again raise the bar for contemporary nature photography.

Between 80 and 100 large format photographs are selected for display which fit into 16 award categories. These amazingly beautiful photographs are complemented with stories behind the photos plus practical details for the photography 'buff'. Photographs come framed, labelled and accompanied with exhibition graphics. Venues may charge an entry fee at their discretion.

### ORGANISED BY

Australian Museum, Sydney on behalf of Natural History Museum, London and BBC Wildlife Magazine

### TOURED BY

Australian Museum, Sydney

### ARTISTS

International professional and amateur photographers

**Contact:** Elizabeth Cowell, Australian Museum, Sydney

**T** 02 9320 6325 **E** elizabeth.cowell@austmus.gov.au

**Cost:** \$4,500 + GST (per month) plus freight

**Size:** Approximately 120 linear metres

**Support material:** Fully illustrated hard and soft back catalogues, media material

**Available:** March to April 2011

# SAGES



JENNY SAGES *EMILY KAME KNGWARREYE WITH LILY* 1993 oil on canvas. Collection National Portrait Gallery, Canberra. Purchased 1998

SAGES is an exhibition of four large portraits of women by senior Sydney artist, Jenny Sages, accompanied by drawings that the artist made in preparation for the works.

Jenny Sages once worked as a fashion illustrator, and drawing her ideas is as natural to her as speaking. Her inquisitive, intelligent and gentle personality is woven through the works, which have come about through the long accretion of experience. They reflect the time she has spent in the bush; her compulsive reading; her fateful meetings; and her reflection, late in life, on her own Russian background.

Subjects of the portraits, executed in the unusual and challenging medium of encaustic, are four sage women: Emily Kngwarreye, Helen Garner, Irina Baronova and the artist herself.

A National Portrait Gallery Exhibition.

## ORGANISED AND TOURED BY

National Portrait Gallery

### CURATOR

Sarah Engledow

### ARTIST

Jenny Sages

**Contact:** Emma Mahanay, National Portrait Gallery

**T** 02 6102 7068 **E** emma.mahanay@npg.gov.au

**Cost:** To be confirmed

**Size:** 4 large encaustic paintings, approximately 20 preparatory drawings and studies, film about the artist produced by the National Portrait Gallery

**Support material:** Signage, wall text, labels

**Education/public programs:** Jenny Sages is available for a floor talk/public program

**Available:** February 2011 to February 2012

# °SOUTH: WAR



ASHLEY GILBERTSON *BAGHDAD, IRAQ* 2004 inkjet print. Image © Ashley Gilbertson, Baghdad, Iraq 2004

*At present there are 43 conflicts taking place on our planet. Once, the battlefield was the place of devastation, now it is streets, alley-ways, schools and places of worship. People and places are no longer protected or sacred and in much of the world it is now safer to be a soldier than an unarmed civilian – °SOUTH members' statement.*

°SOUTH is a collective of dedicated and award-winning Australian documentary photographers who have covered conflicts from Vietnam in 1965 to present day Afghanistan. This collection of their images exposes the impact that war has on its victims, both civilians and military, whose lives are shattered by wars they did not start and over which they have no control.

Often working at great risk to themselves, these photographers have created images that have gone on to influence public opinion, make history and inspire us to find other ways to solve our differences. The exhibition is a haunting journey through the devastation inflicted by war, where the only hope rests in the power of a photograph to deliver a critical humanistic message.

## TOURED BY

Australian Centre for Photography

### CURATOR

°SOUTH

### ARTISTS

Ben Bohane Michael Coyne David Dare Parker  
Stephen Dupont Sean Flynn Ashley Gilbertson Tim Page  
Jack Picone

**Contact:** Tony Nolan, Australian Centre for Photography

**T** 02 9332 1455 **E** gallerymanager@acp.org.au

**Cost:** \$3,000 + GST (freight kindly sponsored by Fujifilm Professional)

**Size:** 80-100 running metres: 72 framed digital inkjet prints, 9 unframed digital inkjet prints

**Support material:** Exhibition labels, interpretative/didactic panels, media kit, floor notes, downloadable material

**Education/public programs:** Speakers may be available on request

**Available:** June 2010 to December 2012

## COLOUR TEXTURE FORM



VICTOR GREENAWAY *SPIRAL LIPPED BOWL* 2005 porcelain, thrown and altered, oxidised to 1260, red interior glaze. Raptis Group purchase, 24th Gold Coast International Ceramic Art Award, 2005

COLOUR TEXTURE FORM is an exhibition curated from the Gold Coast City Gallery Collection that focuses on three of the essential formal qualities of artworks.

The selection of works, with their extraordinary shapes, colours and textures, explore the range of approaches that ceramicists, painters and mixed media artists use when considering how to make their works. The exhibition encourages us to appreciate the brilliant vermilion colour of an exquisite Victor Greenaway bowl and to consider how Mostyn Bramley Moore has jostled paint into position to record water patterns, to reflect light, to express a flow of energy and to rejoice in the opulence of the medium.

COLOUR TEXTURE FORM is a selection of 17 ceramics, 12 paintings and 5 mixed media pieces, displaying some of the strength of one of the most significant regional collections in Australia.

### ORGANISED AND TOURED BY

Gold Coast City Gallery

### CURATOR

Stephen Baxter

### ARTISTS including:

Suzanne Archer Howard Arkley Mostyn Bramley Moore  
Melinda Harper Victor Greenaway Neville French Ross Laurie  
Peter Powditch Bruce Reynolds Chester Nealie  
Lorna Napurrurrla Fencer Michael Taylor Kirsten Coehlo  
Elisabeth Cummings

**Contact:** John Walsh, Gold Coast City Gallery  
**T** 07 5581 6567 **E** gallery@theartscentregc.com.au  
**Cost:** \$1,500 + GST plus cost share freight  
**Size:** Approximately 80 running metres  
**Support material:** To be confirmed  
**Available:** From September 2010

## IAN SMITH: ON AND OFF THE ROAD



IAN SMITH *TRUCKLOAD OF VITAL NATIONAL IMPORTANCE* 2005 oil, synthetic polymer paint on canvas. Courtesy the artist and Heiser Gallery Brisbane

ON AND OFF THE ROAD features large and very colourful paintings by senior Australian artist Ian Smith. The works have been made since 2001 and deal with his interest in depicting the experiences, stories and views of road travel. Smith's works reflect the rhythm of the long distances travelled and the eye of an artist who is very much at home on the road.

There are four major themes within the exhibition:

**Signs** – drawing out metaphor and connections to Australian landscape painting traditions as well as connections to abstract art.

**Loads and trucks** – Smith works from memory and his drawings and collages of the trucks with their strange cargo are the basis for a vivid re-imagining of what these loads might contain, where they have come from and where they are going.

**Family and separation** – Being on the road often means either going to or away from family. Smith has made some acutely personal works about these experiences – something that many families deal with.

**Personal histories on the road** – Smith's works draw references back to his Cairns childhood and interweave memory and experiences of significant journeys in his life into the exhibition.

### ORGANISED AND TOURED BY

Gold Coast City Gallery

### CURATOR

Virginia Rigney

### ARTIST

Ian Smith

**Contact:** Virginia Rigney, Gold Coast City Gallery  
**T** 07 5581 6567 **E** rigney@theartscentregc.com.au  
**Cost:** \$1,500 + GST plus cost share freight  
**Size:** Approximately 100 running metres: 31 paintings  
**Support material:** Catalogue, interpretive labels, documentary film  
**Education/public programs:** Children's labels, education kit, public program guide. The artist is available for talks.  
**Available:** 2011 and 2012: selected dates available

## OCULI: TERRA AUSTRALIS INCOGNITA – A PHOTOGRAPHIC SURVEY



STEVEN SIEWERT *BOYS IN CAR* 2005 60 x 70 cm. From the series "Waiting for Wanda Jackson"

Ten years ago, a group of Australian photographers began Oculi. Committed by a collective vision to represent contemporary Australia and its regions, each member of the group embraces a range of distinctive styles and perspectives that include a strong documentary focus. The exhibition *TERRA AUSTRALIS INCOGNITA* comprises approximately eighty photographic images of Australia as we understand and experience it today.

Depicting Australia in a contemporary light, the images challenge stereotypical images of Australia, while seeking to present a surprisingly non-stereotypical view to non-Australian viewers. The strong visual style of the Oculi collective has defined them as the new generation of photographers.

*TERRA AUSTRALIS INCOGNITA* is an exhibition that challenges notions of nationality, place and cultural belonging through the dynamic medium of photojournalistic photography.

### ORGANISED AND TOURED BY

Manly Art Gallery & Museum

#### CURATOR

Sandy Edwards

#### ARTISTS

Oculi photographers featured are:

Donna Bailey James Brickwood Tamara Dean Jesse Marlow  
Nick Moir Jeremy Piper Andrew Quilty Dean Sewell  
Steven Siewert Tamara Voninski

**Contact:** Sarah Johnson, Manly Art Gallery & Museum

**T** 02 9976 1417 **E** sarah.johnson@manly.nsw.gov.au

**Cost:** To be confirmed

**Size:** Approximately 100 running metres

**Support material:** Oculi book, education kit, media resources, pop up banner, touring manual and kit

**Education/public programs:** Floor talk and in conversation with the artists session available (fees apply), Tertiary, TAFE and Schools Program: Photographic practice (wet and digital), seminars and forums with feature artists, curator and other contemporary photographic practitioners during the exhibition period, children's programming

**Available:** February 2011; From June 2012

## EXCESSORY: CONTEMPORARY AUSTRALIAN JEWELLERY



REBECCA WARD *SHARD BRACELET* 2005 recycled loucre glass, sterling silver, nylon 17.5 x 4.5 x 0.7 cm (stretched out). Image courtesy of the artist

*EXCESSORY* brings together the work of six contemporary Australian jewellery artists who challenge traditional notions of preciousness through the transformation of commonplace, low-value and found materials into jewellery objects. The artists are united by a common interest in manual processes and the value created by an artist's labour and creativity rather than the inherent commercial value of the materials.

### ORGANISED AND TOURED BY

Museums and Galleries NSW

#### CURATOR

Sarah Samild

#### ARTISTS

Vernon Bowden Jeanette James Mark Vaarwerk  
Emily Valentine Zoë Jay Veness Rebecca Ward

**Contact:** Rachel Arndt, Museums and Galleries NSW

**T** 02 9339 9906 **E** rachela@mgnsw.org.au

**Cost:** \$1,900 + GST plus freight for venues outside NSW

**Size:** Approximately 10 running metres

**Support material:** Catalogue, exhibition tour manual, media kit, exhibition labels, signage, 25-minute DVD documentary of the artists produced with Metroscreen

**Education/public programs:** Education resource, some of the artists are available for talks/workshops (for an extra fee)

**Available:** March to December 2011; October 2012 to December 2013

# PROSPECTS: RE-IMAGING GOLD COUNTRY AT OPHIR AND HILL END



(left) ED DOUGLAS *WITH REGARDS TO BEAUFOY MERLIN AND CHARLES BAYLISS* (detail) 2007 photograph. (right) KEN ORCHARD *MINE SHAFT ABOVE CAVE HOLE CROSSING, TURON RIVER* (detail) 2008 ink and pastel on paper 128.0 x 93.0 cm

In 2007, South Australian artists Ken Orchard and Ed Douglas undertook a collaborative artists' residency concentrating on a number of key sites in NSW which are pivotal to the mining history of the nation: Ophir, the Turon valley and Hill End and Carcoar.

Ophir is the first site where "payable gold" was discovered in 1851 and over the next two decades gold was discovered at other sites.

Drawing on this rich visual history, Ken Orchard and Ed Douglas have produced a major exhibition that reflects their deep engagement with this regional landscape. The show is exquisitely wrought in their chosen media – ink drawings, layered pastels, and traditional hand printed black and white photographs.

Ken Orchard chose to work with many of the same views captured by Angas 156 years earlier, while Ed Douglas photographed many of the vistas that Merlin and Bayliss had recorded for posterity.

## ORGANISED AND TOURED BY

Country Arts SA

## ARTISTS AND CURATORS

Ken Orchard and Ed Douglas

**Contact:** Rob Johnston, Country Arts SA  
**T** 08 8444 0403 **E** rob.johnston@countryarts.org.au

**Cost:** \$1,500 + GST plus cost share freight

**Size:** 70 linear metres

**Support material:** Signage, exhibition labels, media kit

**Education/public programs:** Exhibition tour manual, exhibition feedback form

**Available:** December 2011 to December 2012

# MARALINGA: THE ANANGU STORY



TERENCE EDWARDS *END OF OOLDEA MISSION* c. 2008 acrylic on canvas 40.6 x 50.8 cm

The exhibition visually tells the story of the impact of the Maralinga atomic tests on the aboriginal communities that called these lands their home.

The artwork presented has been produced by the Yalata and Oak Valley communities for the book *Maralinga: The Anangu Story*, working with the author Christobel Mattingley published in 2009 by Allen and Unwin.

Through the consultation the community became storytellers, translators and artists telling the story of what they experienced in the lands surrounding Maralinga, before the bombs and after.

Through the workshops, paintings were created to illustrate the stories, which began with the long history of these desert people who travelled in family groups and why the Ooldea Soak near the testing site, with its permanent water, was an important gathering place.

The book and artwork was launched at Tandanya National Aboriginal Cultural Institute in Adelaide by Yami Lester in April 2009.

## ORGANISED AND TOURED BY

Country Arts SA

## CURATOR

Christobel Mattingley

## ARTISTS

Terence Edwards Yvonne Edwards Mabel Queama  
Josie McArthur Marjorie Sandimar Mima Smart Dora Queama  
Hilda Moodoo Audra Bridley Noelene Bridley Janet May  
Martina Boogar

**Contact:** Rob Johnston, Country Arts SA  
**T** 08 8444 0403 **E** rob.johnston@countryarts.org.au

**Cost:** \$1,500 + GST plus cost share freight

**Size:** Approximately 50 to 70 linear metres

**Support material:** Signage, exhibition labels, media kit, gallery copy of the book, panels showing the book pages, exhibition tour manual, exhibition feedback form

**Available:** January to December 2012

## CHRISTOPHER TROTTER: ANIMATED STEEL



CHRISTOPHER TROTTER *SEAHORSE FOSSIL WORKING DRAWING* 1999 graphite and *HIPPOCAMPUS WHITEI - SEAHORSE FOSSIL* installed at Tannum Sands Qld 1999-2000 found objects, concrete

Beyond recycling, this insightful retrospective follows Boonah artist Christopher Trotter, in his transformative processing of scrap steel into larger-than-life animated sculptures. Working with found objects for 15 years, Trotter's quirky creations are comprised of discarded automotive, marine, aviation and farm industry machinery. Each artwork is infused with energy, humour and history.

*Every object I choose to use takes on a new role – one that helps create a work with life, movement, integrity and balance. I like to think I breathe life and personality into the material.* – the artist.

Trotter's artworks can be found in public places, and collections across Australia. His *City Roos* will welcome 40,000 visitors a day to the Australian Pavilion at Shanghai World Expo. Featuring industrial objects, detailed working drawings, small sculptures and documentation, this exhibition promises to inspire, engage and delight audiences of all ages.

Queensland Arts Council provides visual arts experiences as a backdrop for everyday life in Queensland communities. This project has received financial assistance from the Queensland Government through Arts Queensland.

### ORGANISED AND TOURED BY

Queensland Arts Council

### ARTIST

Christopher Trotter

**Contact:** Mia Kempel, Queensland Arts Council

**T** 07 3846 7500 **E** onexhibition@qac.org.au

**Cost:** \$300 + GST plus freight for Local Arts Councils  
\$700 + GST plus freight for all other hirers

**Size:** Approximately 20 linear metres: small sculptures, working drawings, photographs

**Support material:** Digital material: media release, press advertisement, images, e-flyer, invitation, poster. Printed material: labels, exhibition statement, artist statement, condition report, tour manual, comments book

**Education/public program:** Education program, education kit, didactics

**Available:** January to December 2011

## THROUGH THE LOOKING GLASS



MELANIE JAI (WILLIAMS) *MISCOMMUNICATION* (detail) 2009 mixed media

*THROUGH THE LOOKING GLASS* is Gladstone artist and mother Melanie Jai's artistic endeavour to understand the inner world of her autistic son.

This powerful exhibition features whimsical childhood references such as *Alice in Wonderland*, *Little Red Riding Hood*, puppets and dolls, revealing an imagined adventure trail the whole family is on each day, together.

Through stylised portraiture and layered text, Melanie engages you in a gentle commentary on what it might be like to experience the strong, emotions, chaos and confusion associated with Autistic Spectrum Disorder (ASD). The paintings are accompanied by insightful didactics and well researched support material, as the artist intends *THROUGH THE LOOKING GLASS* to inspire understanding, compassion and acceptance for people and families living with ASD.

*This has become my inspiration, my vessel through which to feel what my son feels, to attempt to understand his world.* – the artist.

Queensland Arts Council provides visual arts experiences as a backdrop for everyday life in Queensland communities. This project has received financial assistance from the Queensland Government through Arts Queensland.

### ORGANISED AND TOURED BY

Queensland Arts Council

### ARTIST

Melanie Jai (Williams)

**Contact:** Mia Kempel, Queensland Arts Council

**T** 07 3846 7500 **E** onexhibition@qac.org.au

**Cost:** \$300 + GST plus freight for Local Arts Councils  
\$700 + GST plus freight for all other hirers

**Size:** Approximately 15 linear running metres

**Support material:** Digital material: media release, press advertisement, images, e-flyer, invitation, poster. Printed material: labels, exhibition statement, condition report, tour manual, comments book, printed colour brochure

**Education/public programs:** Exhibition program, education kit, didactics

**Available:** January to December 2011

## 'OUR PLACE', QUEENSLAND REGIONAL ART AWARDS



CLAUDIA WILLIAMS *CRACKS* 2010 paper and timber

The Queensland Regional Art Awards (QRAA) is an annual hallmark event for the state, designed to showcase, support and promote artists living and practicing in regional and remote Queensland. The theme 'Our Place' aims to celebrate the richness and diversity of regional and remote landscapes and community life. Artists are asked to consider their connection with community and place and explore the spiritual, emotional, physical and environmental dimensions that define this relationship.

With all visual art forms being encouraged to enter, this award is open to emerging and established artists over 15 years of age living in regional and remote Queensland. The work of all entrants will be exhibited in the Flying Arts online gallery. Following the award of prizes there will be a curated Queensland regional touring exhibition. The chief judge and curator for the 2010 Awards is Francis Parker, Curator Contemporary Australian Art – Queensland Art Gallery.

### ORGANISED AND TOURED BY

Flying Arts Inc.

### CURATOR

Francis Parker

### ARTISTS

Aspiring, emerging, established artists aged 15+ living in regional and remote Queensland

**Contact:** Sarah Barron, Flying Arts Inc. **T** 07 3109 7350

**E** [pgmcoordinator1@flyingarts.org.au](mailto:pgmcoordinator1@flyingarts.org.au)

**Cost:** 2011 tour \$1,200 + GST; 2012 tour to be confirmed

**Size:** Variable

**Support material:** Exhibition catalogue, media kit, education kit, online exhibition of the Queensland Regional Art Awards on the Flying Arts website, online forums on the Flying Arts website

**Education/public programs:** Public program opportunities, including exhibition related professional development workshops and talks

**Available:** 2010 tour available from February to September 2011; 2011 tour available from January 2012

## THE 60TH BLAKE PRIZE – TOURING EXHIBITION



DIANNE COULTER *COUSIN OF ELIZABETH NT* 2009 ceramic, polyuruthane, cloth and steel armature. 2009 Winner - Blake Prize for Human Justice

The Blake Prize has much to celebrate throughout its history but no achievement more important than the contribution it has made to the careers of artists. Further, the Blake Prize reflects societal shifts in art and religion.

The 2010 touring exhibition will feature 30-35 finalist artworks, including the winning artworks, selected by the judges from the 60th Blake Prize.

[www.blakeprize.com.au/exhibitions/touring-blake](http://www.blakeprize.com.au/exhibitions/touring-blake)

### ORGANISED AND TOURED BY

The Blake Society

### ARTISTS

Winners and selected finalists from the 60th Blake Art Prize (2010) Winner and short-listed poems of the Blake Poetry Prize

**Contact:** Arthur Chan **T** 0430 032 805

**E** [tour@blakeprize.com.au](mailto:tour@blakeprize.com.au)

**Cost:** \$3,500 + GST

**Size:** Approx 45-50 running metres. 30-35 finalist artworks and 10 finalist poems chosen by the judging panels.

**Support material:** Exhibition information pack, tour manual, press material, 1 framed John Coburn original of the Blake Prize logo, artist statements (digital file)

**Education/public programs:** Online education program, public programs available

**Available:** From October 2011

## ONE PERSON IN ISOLATION



NIGEL BRENNAN *HUNGER AND DESPAIR* (detail) 2008 (Somalia) digital photograph

ONE PERSON IN ISOLATION presents the true-life story of Photojournalist, Nigel Brennan, the longest held living captive in Australian history outside of a prisoner of war situation. Through photography, painting, new media, artefacts and spatial reconstruction, this exhibition will uncover the media blanket that blacked out this story as it unravelled over the 462 days and the months that followed Nigel Brennan's release.

ONE PERSON IN ISOLATION will communicate the plight to bring to light a war that has ravaged Somalia for nearly 20 years, an issue that has since prompted a humanitarian and food crisis. These issues are overlaid with the environmental issue of a drought. Through the stories of the capture and detainment of Nigel Brennan, this exhibition will highlight the human right to freely communicate through all modes of communication and the need for untold stories to be heard.

Exhibition content includes 27 photographs, - 15 of which were taken by Nigel Brennan in the 3 days prior to being kidnapped, listening posts of calls between the Brennan family, kidnappers and Nigel Brennan, a touch screen of print media, DVDs including Australian Story 'Proof of Life'<sup>™</sup> and ransom footage, and artefacts related to his kidnapping.

### CURATORS

Bianca Acimovic (Lead Curator), Shelley Pisani (Co-Curator)

### ARTISTS

Nigel Brennan

**Contact:** Bianca Acimovic, Lead Curator T 0421 175 172

**E** bianca@iinet.com.au

Shelley Pisani, Co-Curator T 07 4153 1606

**E** shelley@creativeregions.com.au

**Cost:** \$2,500 + GST

**Size:** Reduced exhibition 100-150 running metres

Full exhibition 200-250 running metres

**Support material:** *Memoir* by Nigel Brennan, Nicky Bonnie and Kellie Brennan, t-shirts, stubby coolers, give-away brochures, posters, media kit

**Education/public programs:** Education kit

**Available:** NSW, VIC, ACT, SA: October 2012 to July 2013;

WA, NT: September 2013 to May 2014; NT, QLD: January to

November 2014; from 2015 negotiable

## MUSIC FROM A FARTHER ROOM



KEITH LINCOLN-COOK *ANNETTE AND BO* 2009 photograph

Time is usually perceived as being linear, but there is another dimension to Time, where everything takes place simultaneously. It is this idea of each age existing in every age that runs through the exhibition, *MUSIC FROM A FARTHER ROOM*.

*MUSIC FROM A FARTHER ROOM* is a group exhibition, developed over an eighteen month period, in conjunction with Gosford Regional Gallery. The six artists involved developed works specifically for the exhibition, around the general theme of the progression of life. Though the works are in a variety of mediums - painting, printmaking, collage, sculpture and photography - they all share the same core idea, that each age exists within every age. Our lives may well evolve, but the inner person remains a constant.

### CURATOR

Charlie Trivers

### ARTISTS

Annette Abolins Amanda Donohue Diane Eklund-Abolins  
Gavin J Hurley Helen Mortimer Keith Lincoln Cook  
(known collectively as Art-In-Sync)

**Contact:** Diane Eklund-Abolins, Art-In-Sync

T 02 4340 1897 **E** art@abolins.net

**Cost:** \$1,000 - \$3,000 negotiable + GST

**Size:** Up to 80 running metres

**Support material:** Artwork for catalogue, website ([www.artinsync.net/age](http://www.artinsync.net/age)), exhibition labels, extra photographic material

**Education/public programs:** Public involvement in a large community work, "The Fabric of Life", artists available for talks

**Available:** September 2010 to September 2013

# ANNE MARIE GRAHAM EXOTIC QUEENSLAND: THE NATURE, THE WONDER



ANNE MARIE GRAHAM *JUNGLE WITH CASSOWARY* 2008 oil on linen

EXOTIC QUEENSLAND: THE NATURE, THE WONDER presents over thirty paintings by senior Australian artist Anne Marie Graham that have been inspired by the Queensland tropics and is scheduled to commence at the Cairns Regional Gallery in late 2011.

An inveterate traveller, Graham has returned repeatedly to Queensland since her first expedition there in 1965. The majority of the *Exotic...* works were executed over the last decade. Two groups of paintings focus on the Glasshouse Mountains and the Cairns Botanic Gardens, whilst the balance feature locations such as Noosa, Port Douglas and Kuranda.

Anne Marie Graham's paintings present a personal view of life that is suffused with colour and incident. Their impact is immediate, underpinned by meticulous technical skill honed through study with such luminaries as George Bell and Emilio Greco. Now aged 85, Graham was honoured with a major survey at Gallery 101 in 2001, and maintains a disciplined studio practice with a solo exhibition every 18 months.

## ARTIST

Anne Marie Graham

**Contact:** Andrew Gaynor T 03 9820 3813

**E** artandrew2002@yahoo.com.au

**Cost:** \$2,500 + GST plus freight and insurance

**Size:** 68 running metres: 31 paintings

**Support material:** Labels, didactic panels, banner and associated publication about Anne Marie Graham's Queensland paintings

**Education/public program:** Floor talk by freelance curator and artist assistant, Andrew Gaynor

**Available:** From July 2012

# SHIBORI UNBOUND



MARGARET BARNETT *SHIBORI UNBOUND* installation view, Orange Regional Gallery, 2008 body wraps and wall hangings

An opportunity to exhibit a contemporary textile installation that uses Shibori techniques (Japanese word for resist dyeing) in innovative ways to explore 'The Shapes, The Spaces and The Silences of Semi Arid Landscapes'.

*This landmark exhibition... marks a conceptual shift in the artist herself from a maker of objects in cloth to an artist capable of handling her work within the broader world of fine art.* - Forrest in *TEXTILE*, September 2008.

*You are confronted with exciting works that stretch your understanding of fibre art. It is not just the technique in its pure form. Margaret uses the traditional technique and places it in a contemporary context.* - Joolie Gibbs, Gympie Regional Gallery.

*The spirit pieces are evocative, so much so that they can be quite scary, resembling floating ghostly forms. Barnett has alluded to aboriginal myth without in any way pinching indigenous styles.* - Alan Sisley, Orange Regional Gallery.

## ARTIST

Margaret Barnett

**Contact:** Margaret Barnett T 07 5496 6202

**E** mbarnett1@hotmail.net.au

**Cost:** \$600 plus freight (no GST)

**Size:** 4 hanging pieces, 1 poster, 4 silk wall hangings 300 x 100 cm, 15 perspex wall plaques 15 x 45 cm with textile sculptures, 3 wraps for mannequins or plinths

**Support material:** Visitors' book, text for labels, touch samples of shibori techniques and fabrics

**Education/public programs:** Artist may be available for public talks and workshops on Shibori (cost involved)

**Available:** March 2011 to December 2012

## ATTENTION Queensland Regional Galleries

Are you planning to submit an application to Arts Queensland's **Regional Galleries Partnership Program** for a touring project?

### **Museum & Gallery Services Qld can help!**

We can provide advice about exhibition development, contracts, itinerary development, crating and freighting, insurance, budget development, the exhibition 'package'...

We can assist you to promote the exhibition to venues nationally.

You can also talk to us about partnership opportunities to include your exhibition in M&GSQ's touring program.

### **What is the Regional Galleries Partnership Program?**

This is a three-year (2010-2013) pilot funded by the Queensland Government through Arts Queensland and the Visual Arts and Craft Strategy, an initiative of the Australian, State and Territory Governments.

The Regional Galleries Partnership Program provides funding of \$200,000 per year from 2010 to 2013 to support regional galleries to develop exhibitions and associated activities. Funding is available for projects up to \$50,000 with the expectation that Local Councils will contribute financially and/or in-kind to the project.

The Program supports the development and production by regional galleries of:

- ◇ Solo and group exhibitions of contemporary visual art, craft and design
- ◇ Artist residencies that result in an exhibition
- ◇ Publications to support exhibitions
- ◇ Collaborative projects between regional galleries.

The Program supports projects that will result in excellent and innovative artistic or cultural work. Projects should have a public outcome, deliver community benefits including opportunities for engagement and participation, and involve collaboration with other artists, organisations and businesses.

**For more information, visit [www.arts.qld.gov.au](http://www.arts.qld.gov.au)**



## STAFF CONTACTS

### EXHIBITIONS

Fiona Marshall  
Exhibition Program Manager  
(Monday to Thursday)  
**P** 07 3215 0826  
**E** [fiona.marshall@magsq.com.au](mailto:fiona.marshall@magsq.com.au)

Jodi Ferrari  
Exhibition Development Coordinator  
(Monday, Wednesday, Friday)  
**P** 07 3215 0825  
**E** [jodi.ferrari@magsq.com.au](mailto:jodi.ferrari@magsq.com.au)

-----

Rebekah Butler  
Executive Director  
(Monday to Thursday)  
**P** 07 3215 8022  
**E** [rebekah.butler@magsq.com.au](mailto:rebekah.butler@magsq.com.au)

Debra Beattie  
General Manager  
**P** 07 3215 0842  
**E** [debra.beattie@magsq.com.au](mailto:debra.beattie@magsq.com.au)

Leisha Lawrence  
Information Officer  
**P** 07 3215 0820  
**E** [information@magsq.com.au](mailto:information@magsq.com.au)

-----

### TRAINING & PROFESSIONAL DEVELOPMENT

Ann Baillie  
Manager Training and Professional Development  
(Wednesday to Friday)  
**P** 07 3215 0845  
**E** [ann.baillie@magsq.com.au](mailto:ann.baillie@magsq.com.au)

Aimee Board  
Training and Professional Development  
Coordinator  
**P** 07 3215 0844  
**E** [aimee.board@magsq.com.au](mailto:aimee.board@magsq.com.au)

## MUSEUM AND GALLERY SERVICES

**QUEENSLAND** is committed to promoting and presenting contemporary visual arts and crafts through touring exhibitions of excellence across Australia.

M&GSQ is part of the NETS (National Exhibition Touring Support) Australia group, a collective of independent visual arts touring organisations that provides professional advice and advocacy concerning contemporary art, craft and design. State offices operate out of a variety of sites – some from within galleries or arts support organisations and others from independent offices. The NETS Australia network includes seven state organisations and a representative from the National Gallery of Australia touring exhibitions program.

The organisations within the NETS network in each State and Territory are funded by the Federal Government through the Australia Council, its arts funding and advisory body.

Museum and Gallery Services Queensland is funded by the Queensland Government, through Arts Queensland, and is supported by the Visual Arts and Craft Strategy, an initiative of the Australian, state and territory governments.

### Australian Capital Territory

**National Gallery of Australia Travelling Exhibitions**

[www.nga.gov.au](http://www.nga.gov.au)

### New South Wales

**Museums & Galleries NSW**

[www.mgnsw.org.au](http://www.mgnsw.org.au)

### Northern Territory

**Artback NT**

[www.artbacknt.com.au](http://www.artbacknt.com.au)

### Queensland

**Museum and Gallery Services Queensland**

[www.magsq.com.au](http://www.magsq.com.au)

### South Australia

**Country Arts SA**

[www.countryarts.org.au](http://www.countryarts.org.au)

### Tasmania

**Contemporary Art Services Tasmania (CAST)**

[www.castgallery.org](http://www.castgallery.org)

### Victoria

**National Exhibitions Touring Support (NETS) Victoria**

[www.netsvictoria.org](http://www.netsvictoria.org)

### Western Australia

**Art on the Move**

[www.artonthemove.com.au](http://www.artonthemove.com.au)

