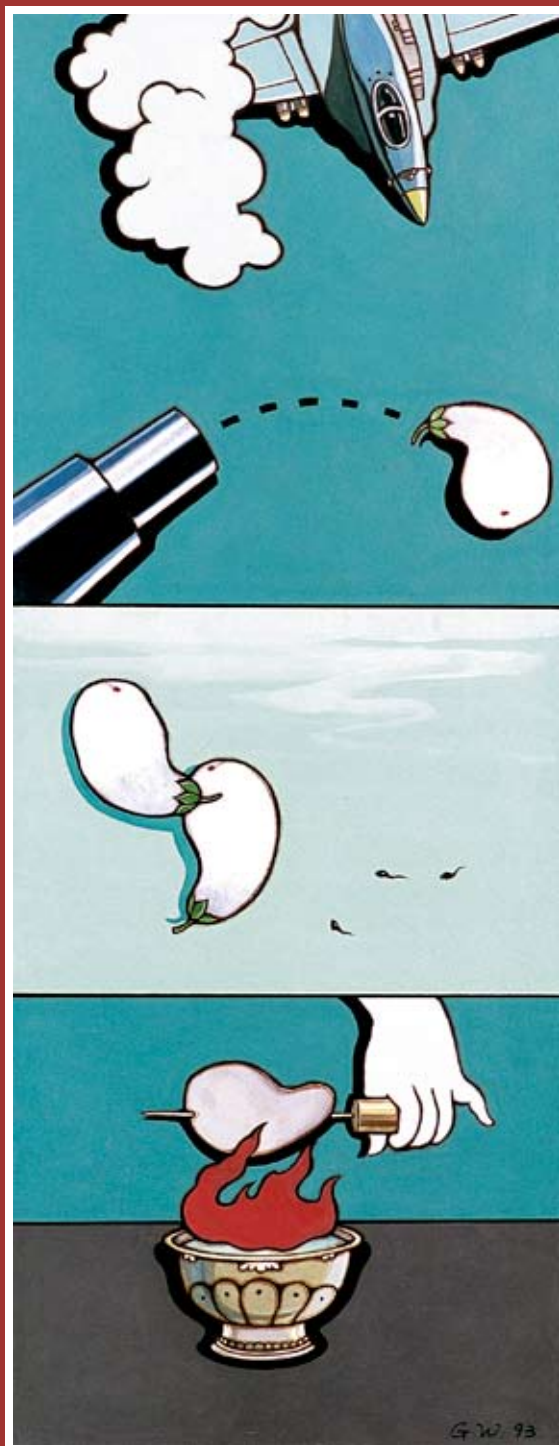


UPDATE

2010 touring exhibition program

Issue Number 46, 2009



GUAN WEI *THE GREAT WAR OF THE EGGPLANT NO. 2* 1993 synthetic polymer paint on canvas 127 x 49 cm. Collection of Gold Coast City Art Gallery. Reproduced courtesy of the artist.

museum & gallery SERVICES
QUEENSLAND

MUSEUM & GALLERY SERVICES QUEENSLAND
LEVEL 3, 381 BRUNSWICK STREET, FORTITUDE VALLEY QLD 4006
P 07 3215 0820 Freecall 1800 680 433 F 07 3215 0821
E information@magsq.com.au W www.magsq.com.au

TOURING EXHIBITION PROGRAM

Fiona Marshall Exhibition Program Manager
P 07 3215 0826
E fiona.marshall@magsq.com.au

Jodi Ferrari Exhibition Development Coordinator
P 07 3215 0825
E jodi.ferrari@magsq.com.au

Bonnie Melrose Exhibition Development Coordinator
P 07 3215 0840
E bonnie.melrose@magsq.com.au

CONTENTS

PAGE

Recycled Library: Altered books	3
Twelve Degrees of Latitude: Regional Gallery and University Art Collections in Queensland	4/5
Kuru Alala – Eyes Open	6
unleashed – queensland design on tour	7
Desert Psychedelic: Jimmy Pike	8
Replant: a new generation of botanical art	9
Creative Generation Excellence Awards in Visual Art and Design 2010 - 2011 touring exhibition	10
Creative Generation Excellence Awards in Visual Art and Design 2009 - 2010 touring exhibition	11
Jettison Wove	12
Talking TAPA: Pasifika Bark Cloth in Queensland	13
Habitus - Habitat	14
Antarctica - A Place in the Wilderness	15

STAFF CONTACTS

Rebekah Butler, Executive Director
rebekah.butler@magsq.com.au

Debra Beattie, General Manager
debra.beattie@magsq.com.au

Leisha Lawrence, Information Officer
information@magsq.com.au

TRAINING AND PROFESSIONAL DEVELOPMENT

Ann Baillie, Manager Training and Professional Development
ann.baillie@magsq.com.au

Kerri Laidlaw, Training and Professional Development Coordinator
kerri.laidlaw@magsq.com.au

EXHIBITIONS

Fiona Marshall, Exhibition Program Manager
fiona.marshall@magsq.com.au

Jodi Ferrari, Exhibition Development Coordinator
jodi.ferrari@magsq.com.au

Bonnie Melrose, Exhibition Development Coordinator
bonnie.melrose@magsq.com.au

In August 2008 Museum and Gallery Services Queensland launched an exciting new resources website at www.geoproject.org.au. The GEO Project offers an online and interactive approach to enhance engagement with a suite of four exhibitions by considering their connections and differences in relation to the theme of 'art and the environment'. These exhibitions will be touring to national venues from 2008-2010. Each of the GEO exhibitions pose particular questions and narratives about ecology, environment and geography that traverse technology, culture, history and science. The website features image galleries, critical writing, an education kit and online activities that add a layer of interest, documentation, education and interaction across the GEO exhibitions: *Antarctica – A Place in the Wilderness*, *Intimate Transactions*, *Habitus – Habitat* and *Replant: a new generation of botanical art*.

The GEO Project is supported by the Visual Arts and Craft Strategy, an initiative of the Australian, state and territory governments, and has received financial assistance from the Gordon Darling Foundation and the Queensland Government through Arts Queensland.



RECYCLED LIBRARY: ALTERED BOOKS

Recycled Library: Altered books is an **Artspace Mackay** exhibition that traces a history of altered books in Australia through the work of seventeen artists. The works featured in the exhibition incorporate existing/found books presented as sculptures, wall-based collages, artists' books, or as photographs.

During an era in which the printed page is in danger of being superseded by digital technology, the connecting element in all the work is a continuing fascination with the iconic significance and primacy of 'the book'.

The exhibition focuses on works that have a conceptual, political or social concern. Many of the works in the exhibition explore the reliance on the printed text as a vehicle for cultural migration. They question the presumed knowledge about history, philosophy, science, literature and even art that predominantly derived from their Anglo-Celtic culture.

The majority of the artists included in *Recycled Library* have exhibited extensively throughout Australia and overseas. Their works are represented in state and national collections, with several represented in the Mackay Regional Council Artists' Book Collection.

Recycled Library: Altered books is a national travelling exhibition curated by Michael Wardell for Artspace Mackay and toured by Museum & Gallery Services Queensland. The exhibition tour is supported by the Contemporary Touring Initiative through Visions of Australia, an Australian Government program, and the Visual Arts and Craft Strategy, an initiative of the Australian Government and state and territory governments.



TOUR MANAGER

Bonnie Melrose

CURATOR

Michael Wardell

ARTISTS

Jayne Dyer Simryn Gill Julie Gough Paul Hoban Paul Partos
Liz Jeneid Yvonne Kendell Archie Moore Janis Nedela
Patrick Pound Alex Selenitsch David Sequeira Glen Skien
Kylie Stillman Hossein Valamanesh Marion Borgelt Ti Parks



KYLIE STILLMAN *BUFF-TAILED THORNBILL* 2005
carved book 43.5 x 33.5 x 6.0 cm. Collection Artspace Mackay, Mackay Regional Council

2010 ITINERARY

Gladstone Regional Art Gallery & Museum
18 December 2009 – 6 March

Grafton Regional Gallery
17 March – 25 April

Mornington Peninsula Regional Gallery
12 May – 27 June

Western Plains Cultural Centre, Dubbo
3 July – 8 August

Civic Hall Galleries, Port Lincoln
26 August – 10 October

Port Pirie Regional Art Gallery
29 October – 12 December

Murray Bridge Regional Gallery
18 December – 12 February 2011

TWELVE DEGREES OF LATITUDE REGIONAL GALLERY AND UNIVERSITY ART COLLECTIONS IN QUEENSLAND

Museum and Gallery Services Queensland (M&GSQ) is proud to present *Twelve Degrees of Latitude: Regional Gallery and University Art Collections in Queensland*. This landmark exhibition makes available to Queensland audiences, for the first time and on an unprecedented scale, a selection of artworks from 27 of the State's regional gallery and university collections.

Queensland is home to a growing network of about 80 regional and public galleries, many of which hold collections of local, state and national significance. *Twelve Degrees of Latitude* is an important tribute to the outstanding contribution our State's regional galleries and collecting institutions make to our social, economic and cultural wellbeing.

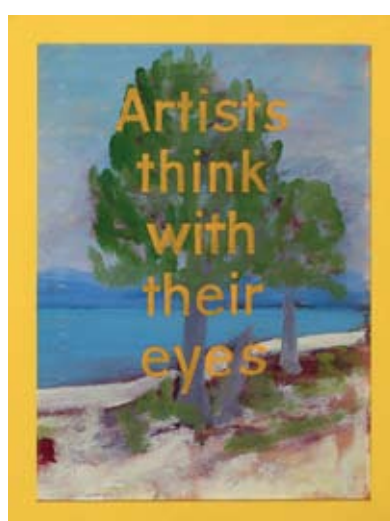
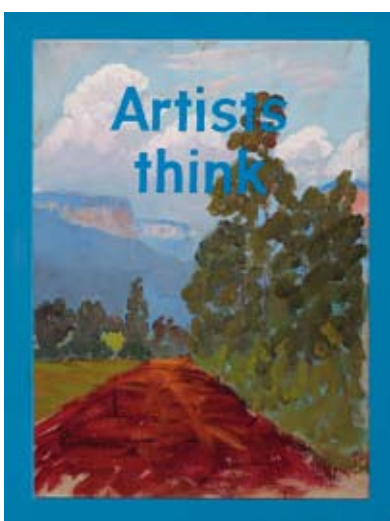
Co-curated by Bettina MacAulay and Brett Adlington for Queensland's 150th year, *Twelve Degrees of Latitude* features major Australian, Indigenous, Pacific and European artwork dating from the 17th to the 21st century. The exhibition contains a range of visually spectacular small and large-scale wall works, three-dimensional, experimental and freestanding works, including works by leading Queensland artists.

Twelve Degrees of Latitude: Regional Gallery and University Art Collections in Queensland is a Museum and Gallery Services Queensland traveling exhibition. M&GSQ acknowledges the assistance of the Hon. Anna Bligh MP, Premier of Queensland and Minister for the Arts, through the Queensland Government Exhibitions Indemnification Scheme.

The regional tour of *Twelve Degrees of Latitude* is proudly supported by the Tim Fairfax Family Foundation, The John Villiers Trust, International Art Services and the Regional Galleries Association of Queensland and has received financial assistance from the Queensland Government through Arts Queensland. This exhibition has received development funding from the Queensland Government's Q150 Community Funding Program. Q150 gives Queenslanders the opportunity to celebrate and commemorate our state's 150th anniversary. *Twelve Degrees of Latitude* is also supported by the Gordon Darling Foundation, Phillip Bacon Galleries and the Visual Arts and Craft Strategy, an initiative of the Australian, state and territory governments.



BEN QUILTY *TORANA, NELSON STREET* 2004 oil on canvas 30 x 50 cm. Collection of Ipswich Art Gallery. Reproduced courtesy of the artist and Jan Manton, Brisbane.



IAN BURNS *ARTISTS THINK NO. 2* 1993 oil on canvas boards, painted frames, three parts 38.5 x 29.0 x 4.5 cm. Collection of The University of Queensland. Reproduced courtesy of the artist's estate and Milani Gallery, Brisbane. Photograph: Carl Warner.



ALICK TIPOTI *KOBUPA THOERAPIESE (PREPARING FOR WAR)* 6/98 1999 linocut on paper 102 x 70.5 cm. Collection of Cairns Regional Gallery. Reproduced courtesy of the artist and the Australian Art Print Network.

TOUR MANAGER

Fiona Marshall

CURATORS

Bettina MacAulay

Brett Adlington

ARTISTS including:

Brendan Adair-Smith Tony Albert Davida Allen Rick Amor
Richard Bell Gordon Bennett Mandy Martin John Coburn
Ray Crooke Lawrence Daws Marian Drew Max Dupain
William F. Emery Fiona Foley Joe Furlonger Rosalie Gascoigne
Miles Hall Mari Hirata Samantha Hobson George Leslie Hunter
Leah King-Smith Craig Koomeeta Rosanna Li Wei Han
Alasdair Macintyre Ron McBurnie Noel McKenna Rob McQueen
Arone Meeks Billy Missi Tracey Moffatt Rosella Namok
Sidney Nolan Dennis Nona Margaret Olley Patricia Piccinini
Gwyn Hanssen Pigott Ben Quilty Scott Redford Lloyd Rees
William Robinson Anneke Silver Jeffrey Smart Arthur Streeton
Grace Cossington Smith Ken Thaiday Snr. Alick Tipoti
Judy Watson Christopher Trotter Gerry Wedd Guan Wei Anne
Zahalka Michael Zavros

2010 ITINERARY

Logan Art Gallery
5 January – 6 February

Gladstone Regional Art Gallery & Museum
5 March – 15 May

Artspace Mackay
28 May – 11 July

Toowoomba Regional Art Gallery
19 July – 5 September

Caloundra Regional Art Gallery
6 October – 7 November
University of the Sunshine Coast Gallery
23 September – 6 November

Stanthorpe Regional Art Gallery
19 November – 21 January
Warwick Art Gallery
19 November – 21 January



KURU ALALA - EYES OPEN

The exhibition *Kuru Alala – Eyes Open* showcases new work generated as a result of an extensive residency and workshop programme held over two years in remote desert communities across Central Australia.

Contemporary installation artists Maria Fernanda Cardoso and Alison Clouston visited the Ngaanyatjarra and Pitjantjatjara Lands respectively to exchange ideas, experiences and skills with fibre artists from the renowned Tjanpi Desert Weavers. They have collaborated on the development of an exhibition with the aim to stimulate greater awareness and insight into concepts of culture, country and community.

These unique works reveal the dynamic nature of creative practice within these remote desert communities and reflect how contemporary life and stories interweave with historical and ancestral ones.

Kuru Alala - Eyes Open is a travelling exhibition developed by the **Gold Coast City Art Gallery** in partnership with **Tjanpi Desert Weavers**, proudly supported by the Balnaves Foundation and toured by Museum and Gallery Services Queensland.

This project has been made possible through the Touring Exhibition Partnership Plan of Museum and Gallery Services Queensland, with assistance from the Australia Council, the Federal Government's arts funding and advisory body and the support of Visions of Australia, an Australian Government Program supporting touring exhibitions by providing funding assistance for the development and touring of Australian cultural material across Australia.



TJANPI DESERT WEAVERS *TITJI TJUTA GIRLS*
CAMP 2009

TOUR MANAGER

Fiona Marshall

ARTISTS

Maria Fernanda Cardoso Alison Clouston Tjanpi Desert Weavers

2010 ITINERARY

Redland Art Gallery
6 March – 11 April

Cultural Centre, Townsville
24 May – 11 July

UNLEASHED - QUEENSLAND DESIGN ON TOUR

unleashed—queensland design on tour showcases recent Queensland design projects selected from the award-winning entries of the Design Institute of Australia's qdos (queensland design on show) Awards annual program in 2009.

The DIA qdos Awards program is the most dynamic, multidisciplinary awards program in Queensland – attracting design entries from across the state. DIA qdos Awards cover a range of design disciplines within Three Dimensional Design, Visual Communication Design, Interior Design and Emerging Student Design sectors.

For the past eight years, the Awards program has celebrated design excellence in Queensland and established Queensland as a centre of innovation and creativity within Australia. These awards recognise the skill and contribution of Queensland's best and brightest design professionals and raises awareness of the value of design in the community.

unleashed—queensland design on tour, presented by the Design Institute of Australia - Queensland Branch, is curated by artisan and toured by Museum and Gallery Services Queensland. This project has received financial assistance from the Queensland Government through Arts Queensland.



HELENA KINNUNEN (DEKA FURNITURE) *I...STOOL*
2008 50 x 50 x 50 cm

TOUR MANAGER

Jodi Ferrari

CURATOR

Kirsten Fitzpatrick for artisan

2010 ITINERARY

Chinchilla White Gums Gallery
29 January – 25 February

Mount Isa Memorial Civic Centre
2 – 29 March

**Quilpie Museum, Gallery & Visitor
Information Centre**
16 April – 26 May

Emerald Art Gallery
4 – 29 June

Gladstone Regional Art Gallery & Museum
30 July – 28 August

DESERT PSYCHEDELIC: JIMMY PIKE

Produced at the height of the Indigenous cultural renaissance, Jimmy Pike's designs are vivid, dynamic and groundbreaking in their use of non-traditional colours. Due to his collaboration with the company, Desert Designs, they exploded onto an international stage via high-fashion garments, textiles and furnishings, and represented one of the most successful forays into the intersecting territories of Indigenous art, craft and commercial design to date.

Desert Psychedelic, curated by Kirsten Fitzpatrick for **artisan** in partnership with Desert Designs, features Pike's original prints, textile lengths and the garments produced from his fabric designs. The exhibition offers a chance to celebrate Jimmy Pike's unique talent and to revisit some spectacular fashion from the eighties.



Installation at Gallery artisan. Photograph: Andrea Higgins

TOUR MANAGER

Jodi Ferrari

CURATOR

Kirsten Fitzpatrick

ARTIST

Jimmy Pike



THE VISUAL ARTS AND CRAFT STRATEGY



JIMMY PIKE *MANGKAJA KURU* 1984 screenprint on paper. Photograph: Romy Willing

2010 ITINERARY

Toowoomba Regional Art Gallery
1 January – 7 February

Australian Catholic University, Brisbane
22 February – 28 March

REPLANT: A NEW GENERATION OF BOTANICAL ART

Replant: a new generation of botanical art straddles the boundaries between science and art; an excursion into the remarkable world of plants in the tropical north of Australia through the eyes of six Indigenous and non-Indigenous Australian printmakers and a photographer. Working with the Northern Territory Herbarium and traditional knowledge custodians from the Daly River region, the artists investigate the unique characteristics of Indigenous plant species that survive and prosper through the climatic extremes of monsoonal rains, dry weather and wild fires.

Through its unique cross-cultural collaborative approach, *Replant* reflects the traditional role of women as gatherers of food and holders of knowledge, while the process of printmaking has developed as a significant medium for Indigenous artists.

Replant: a new generation of botanical art has been curated and coordinated by Angus and Rose Cameron of Nomad Art Productions. The project was assisted by the Australian Government through the Australia Council, its arts funding and advisory body and the Northern Territory Government through the Department of Natural Resources, Environment and the Arts and the Research and Innovation Board & Fund.

Replant: a new generation of botanical art is an Artback NT: Arts Development and Touring exhibition presented by Museum and Gallery Services Queensland.

This exhibition is supported by The GEO Project - a resources website designed to maximise community engagement with a suite of touring exhibitions exploring the theme of 'art and environment' by providing critical writing, educational activities, an image archive and the opportunity for user generated content.



MARITA SAMBONO *UNDERWATER LILIES* 2006 etching on paper 33 x 24.5 cm

TOUR MANAGER

Fiona Marshall

CURATORS

Angus and Rose Cameron, Nomad Art Productions

ARTIST

Printmakers: Fiona Hall (SA) Judy Watson (QLD) Winsome Jobling (NT) Deborah Wurrkidj (NT) Marita Sambono (NT) Irene Mungatopi (NT)

Photographer: Peter Eve (NT)



2010 ITINERARY

Chinchilla White Gums Gallery:
6 July – 31 July

Lake Macquarie City Art Gallery:
6 August - 19 September

Centre for Scenic Rim Arts and Culture:
6 October - 28 November

Texas Regional Art Gallery:
December - February

CREATIVE GENERATION EXCELLENCE AWARDS IN VISUAL ART AND DESIGN 2010 - 2011 TOURING EXHIBITION

The *Creative Generation Excellence Awards in Visual Art and Design 2010 - 2011 Touring Exhibition* is a vibrant exhibition of art work by Queensland's top high school visual arts students, showcasing works on paper, sculpture, film, printmaking, photography and mixed media.

The *Creative Generation Excellence Awards in Visual Art and Design 2010 - 2011 Touring Exhibition* aims to promote and recognise excellence in senior visual arts education throughout Queensland state and non-state schools. Held annually since 1990, the awards have helped raise community awareness about the degree of sophistication in concepts, diversity of technical competence, and the high standard of arts programs in Queensland secondary schools. They encourage students to achieve high standards and promote visual arts in schools and their wider community. The exhibition tour will be launched at the Queensland Art Gallery | Gallery of Modern Art in April 2010 and travel to regional venues during 2010/2011.

The *Creative Generation Excellence Awards in Visual Art and Design 2010 - 2011 Touring Exhibition* is a Department of Education Training and the Arts program.



LAURA COLLINS *COLOURLESS NON-EXISTENCE* 2009
mixed media 25 x 76 x 16 cm (Springwood State High School)

TOUR MANAGER

Fiona Marshall

ARTISTS

Jaimee Abbay Allison Beech Philippa Cary Rachel Choi
 Laura Collins Ella Cottle Nicola Curro Jenna Daley Brayden Doig
 Claire Dunne Sophie Farmer Ashleigh Firmin George Gaby
 Mirika Guffin Melany Hayes Neil Hiscocks Carmen Holmes
 Bridget Hooper Ruby Hughes Sarah Hylton Dylan Janssen
 Yui Kimura Samantha Knight Brighde Lewis Megan Mabin
 Natalie Maher Romany Maunder Ashleigh McInnes
 Susan McTaggart Chiho Miyagi Laura Moffat Kirstin Payne
 Sarah Poulgrain Eloise Soper-Smith Alanah Toleman
 Stephanie Tomoana Nickolas Warfield Hannah Whiteley
 Bernadine Yong Chris Yung

2010 ITINERARY

Tableland Regional Gallery, Atherton
25 June – 1 August

Emerald Art Gallery
6 – 27 August

Rockhampton Art Gallery
8 October – 21 November

Gladstone Regional Art Gallery & Museum
15 December – 26 February

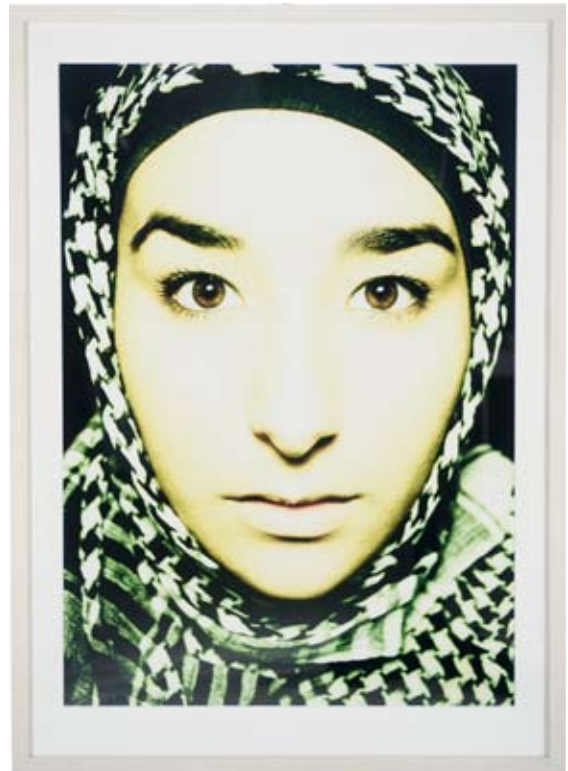
CREATIVE GENERATION EXCELLENCE AWARDS IN VISUAL ART AND DESIGN 2009 - 2010 TOURING EXHIBITION

The *Creative Generation Excellence Awards in Visual Art and Design 2009 - 2010 Touring Exhibition* invites the community to experience artworks by some of Queensland's outstanding senior visual arts students. The 2009 touring exhibition showcases the artwork of 40 senior students from both state and non-state schools in every region of the state.

The awards encourage students to achieve high standards and promote the study of visual arts practice in schools and to the wider community. They also demonstrate the degree of sophistication in concepts, diversity of artforms and media, and the high standard of arts programs in Queensland secondary schools.

The touring exhibition provides students with an opportunity to present their works to the community in a professional exhibition context.

The *Creative Generation Excellence Awards in Visual Art and Design 2009 - 2010 Touring Exhibition* is a Department of Education Training and the Arts program.



MEDINA MUFIC-BEGOVIC *MEAT* 2008 digital image 98.5 x 71.4 x 4 cm (2) (Brisbane State High School)

TOUR MANAGER

Bonnie Melrose

ARTISTS

Erin Bishara Tessa Brown Daniella Capelo Genevieve Carter
Ben Chiang Khara Deurhof Brooke Dobbie Marnie Edmiston
Stacey Garrett Naarah Goode Johnny Huang Chelsea Hunter
Marshall Kusabs Jade Landell-Jones Katelyn McCulloch
Ashlyn McEldowney Charlotte Miller Hayden Moody Jess Morton
Medina Mujic-Begovic Nathan Mulligan Leah Musch David Page
Caitlin Pass Araminta Pearce Bianca Pohlman Caitlyn Pudney
Angelica Roache-Wilson Christina Roberts Jordan Rochfort
Elysia Rubio Stephanie Rykoff Maddy Savage Madison Strutynski
Nic Trott Elise Usher Jesse Vogelaar Ben Wall Angus Waller
Jenny Woodland

2010 ITINERARY

Texas Regional Art Gallery
9 December 2009 – 16 January 2010

Chinchilla White Gums Gallery
2 – 25 March

Bauhinia Bicentennial Art Gallery, Springsure
5 April – 22 May

Stanthorpe Regional Art Gallery
4 June – 13 July

Australian Catholic University, Brisbane
21 July – 15 September

JETTISON WOVE

Jettison Wove is an exploration of contemporary weaving by Queensland Aboriginal and Torres Strait artists. The artists combine the use of discarded and man-made materials with time-honored techniques and forms to create vessels imbued with a permanence not previously associated with their traditional weavings of natural fibres. The combination of traditional techniques with contemporary materials, such as day-glo plastic string, far outlives the customary use of natural fibres such as cane. More significantly it politically positions the artists, their art, and culture within a throw away society.

The exciting use of colour, text and materials are indicative of both the humour and innovation apparent in the creation of the contemporary vessels on show. Baby baskets for Barbie, masculine wire forms, and packing-tape flowers are just a few.

This exhibition has been supported by a workshop program and an installation workshop for staff at participating venues.

Jettison Wove, curated by Eliza Tee and Louise Rollman and developed by **artisan**, is toured by Museum & Gallery Services Queensland. The exhibition tour is supported by Arts Queensland's Backing Indigenous Arts funding program.



JENNY MYE *ERUB EPEI* 2005 packing tape 55 x 35 x 24 cm. Photograph: Andrea Higgins



TRISH BARNARD *ALL THAT GLITTERS* 2007 synthetic gold fibre 93 x 30 x 30 cm. Photograph: Andrea Higgins

TOUR MANAGER

Bonnie Melrose

CURATORS

Eliza Tee

Louise Rollman

ARTISTS

Trish Barnard (Yambina Communities) Theresa Beeron
(Jumbun Community) Tonya Grant (Jumbun Community)
Abe Muriata (Jumbun Community) Ninney Murray
(Jumbun Community) Jenny Mye (Darnley Island, Torres Strait)

2010 ITINERARY

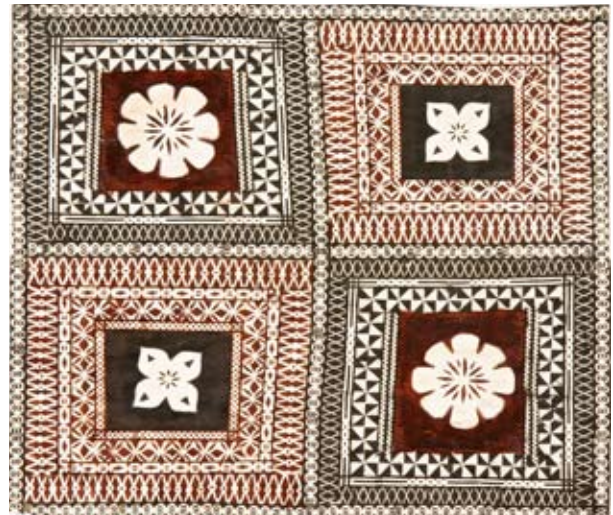
**Gab Titui Cultural Centre, Thursday Island
8 February – 5 March**

TALKING TAPA: PASIFIKA BARK CLOTH IN QUEENSLAND

Talking TAPA: Pasifika Bark Cloth in Queensland showcases the diversity of Pacific Islander cultural practices, heritage and visual iconography through tapa (beaten bark cloth).

Made from the inner bark of the paper mulberry tree, tapa has various qualities and uses throughout the Pacific. Tapa designs reference plant and animal motifs, clan and family patterning and contemporary events. Works from Papua New Guinea, West Papua, Samoa, Tonga, Solomon Islands, Vanuatu, Fiji, Wallis and Futuna, and the Cook Islands have been sourced from community members, private collectors and public institutions, including the Anthropology Museum, University of Queensland and Queensland Museum. Associated materials include community photographs and contemporary artworks incorporating tapa.

This is a Brisbane Multicultural Arts Centre (BEMAC) project, funded by Visions of Australia, an Australian Government program supporting touring exhibitions by providing funding assistance for the development and touring of Australian cultural material across Australia. The project has also received funding from the Brisbane City Council and Queensland Government's Gambling Community Benefit Fund.



FIJI - I DELA NI DABEDABE Nayau Island 2003 paper mulberry bast, candlenut kernel soot, umea (ochre/soil) 63 x 70 cm. Gifted to siblings Timothy and Julia Le Grand in 2004. Courtesy of Jimaima Taoi Le Grand



Australian Government
Visions of Australia



Dedicated to a better Brisbane



Gambling
Community Benefit Fund
Queensland Government



SULUNI VAKAMAU TRADITIONAL FEMALE WEDDING ATTIRE/ SET three-piece set made by Nainasa Kacimawai Nayau village, Lau Province, acquired from the makers at the Melanesian Arts and Culture Festival, Fiji 2006. Mannequin dressed by Jiowana Dau Miles. On loan from the collection of Susan Cochrane.

TOUR MANAGER

Fiona Marshall

CURATOR

Joan G. Winter

2010 ITINERARY

Monash Gallery of Art
12 February – 4 April

Art Gallery of Ballarat
17 April – 30 May

Mosman Art Gallery
5 June - 18 July

Manning Regional Art Gallery, Taree
23 July – 5 September

Bathurst Regional Gallery
15 October – 28 November

HABITUS - HABITAT

Inspired by Queensland's spectacular environments and natural wonders, *Habitus - Habitat* presents artists' extraordinary interpretations of a diverse range of environments, from the world's largest sand island to tropical rainforests.

Habitus - Habitat is as much about artmaking processes, about dialogue between artists and artworks as it is about unique artistic expression. The tour brings together works from each of the Great Walks residencies and increases the reach of the original program, providing a catalyst for further art and environment projects.

The curatorial rationale of the project *Habitus - Habitat* is based on the concept that a point of union occurs between nature and culture¹. There is an unfolding quality to the exhibition that becomes apparent when the threads of the many individual responses and journeys emerge, overlap, entwine and intersect with one another.

The exhibition has received assistance from Powerlink and the Environmental Protection Agency and is supported by the Visual Arts and Craft Strategy, an initiative of the Australian, state and territory governments and the Queensland Government through Arts Queensland.

Habitus - Habitat is part of a suite of exhibitions supported by The GEO Project - a resources website designed to maximise community engagement with a suite of touring exhibitions exploring the theme of 'art and environment' by providing critical writing, educational activities, an image archive of the residency program, and the opportunity for user generated content.

¹ Beth Jackson, 'HABITUS - HABITAT Curatorial rationale - great! walks art and environment' in 'Artery' Vol 1 issue 2, Museum and Gallery Services Queensland, Dec 2005 p.13



ELIZABETH WOODS, *PRINCESSE KONDALILLA*
2005 ephemeral installation, powdered clay 200m series of two photographs 83.5 x 66.5 x 2 cm framed. Photographer Maurice Ortega



TOUR MANAGER

Fiona Marshall

ARTISTS

Marian Drew Craig Walsh Sebastian Moody Jeremy Hynes
Elizabeth Woods Meaghan Shelton Fiona Foley Jill Chism
Barbara Hart Zane Saunders Barbara Pierce Anne Lord
Ben Trupperbaumer Brian Robinson Ruth Parry Holly Grech
Shane Fitzgerald Frankie Bowe Glen Skien Marion Gaemers
Maree Edmiston-Prior Bonemap (Rebecca Youdell & Russell Milledge)

2010 ITINERARY

Artspace Mackay
5 February – 4 April

Umbrella Studio, Townsville
23 April – 30 May

Bundaberg Arts Centre
14 July – 22 August

Tamworth Regional Gallery
4 September – 24 October

**Logan Art Gallery and
Yugambeh Museum Language and
Heritage Research Centre, Beenleigh**
16 November – 8 January

ANTARCTICA - A PLACE IN THE WILDERNESS

In 2005 Judy Parrott was awarded an Antarctic Art Fellowship to document environment and community life at Australia's three Antarctic stations. The resulting exhibition is a series of dramatic photographs of this extreme environment in the form of 58 silver gelatin prints, plus a collaged audio recording and a selection of found objects.

The exhibition also covers life on the ship, 'Aurora Australis', whilst journeying south. It documents the work of the scientists and tradespeople, field trips, the day-to-day life of the station and the environment and an Antarctic Christmas and New Year.

The exhibition includes silver gelatin photographs of community and place; a data projection of colour images; informative text and local ambient sounds such as the cracking of ice during the boat voyage and the slicing of bitter winds. It also incorporates locally played music and members of the community talking about their work and their environment. All these elements are collaged together into a CD.

Objects such as eggshells and algae were collected from the Antarctic environment with a collection permit, and also donated by the Australian Antarctic Division for exhibition purposes.

This exhibition has been supported by Brisbane City Council, the Australian Antarctic Division and the Queensland Government through Arts Queensland. The public program for *Antarctica - A Place in the Wilderness* is proudly funded by the Queensland Government's Gambling Community Benefit Fund.

This exhibition is supported by The GEO Project - a resources website designed to maximise community engagement with a suite of touring exhibitions exploring the theme of 'art and environment' by providing critical writing, educational activities, an image archive and the opportunity for user generated content.



JUDY PARROTT *SEA ICE* 2006 silver gelatin photograph 46.5 x 54.3 x 2.1 cm



JUDY PARROTT *WEDDELL SEAL AT MAWSON* 2006 silver gelatin photograph 46.5 x 54.3 x 2.1 cm

TOUR MANAGER

Jodi Ferrari

ARTIST

Judy Parrott

2010 ITINERARY

Bundaberg Regional Art Gallery
27 January – 7 March

Qantas Founders Museum, Longreach
23 March – 7 June

MUSEUM AND GALLERY SERVICES

QUEENSLAND is committed to promoting and presenting contemporary visual arts and crafts through touring exhibitions of excellence across Australia.

M&GSQ is part of the NETS (National Exhibition Touring Support) Australia group, a collective of independent visual arts touring organisations that provides professional advice and advocacy concerning contemporary art, craft and design. State offices operate out of a variety of sites – some from within galleries or arts support organisations and others from independent offices. The NETS Australia network includes seven state organisations and a representative from the National Gallery of Australia touring exhibitions program.

The organisations within the NETS network in each State and Territory are funded by the Federal Government through the Australia Council, its arts funding and advisory body.

Museum and Gallery Services Queensland is funded by the Queensland Government, through Arts Queensland, and is supported by the Visual Arts and Craft Strategy, an initiative of the Australian, state and territory governments.

Australian Capital Territory

National Gallery of Australia Travelling Exhibitions

www.nga.gov.au

New South Wales

Museums & Galleries NSW

www.mgnsw.org.au

Northern Territory

Artback NT

www.artbacknt.com.au

Queensland

Museum and Gallery Services Queensland

www.magsq.com.au

South Australia

Country Arts SA

www.countryarts.org.au

Tasmania

Contemporary Art Services Tasmania (CAST)

www.castgallery.org

Victoria

National Exhibitions Touring Support (NETS) Victoria

www.netsvictoria.org

Western Australia

Art on the Move

www.artonthemove.com.au

